

Leading the way in cable trunking

For all products and sales...

call 01793 611777

fax 01793 615500



Skirting Trunking



TF62/2C
150mm x 50mm
(2 compartment)
top 50mm, bottom 100mm



TF82/3C
200mm x 50mm
(3 compartment)
top 50mm, centre 100mm,
bottom 50mm

Flytec skirting trunking is supplied in 2 metre lengths, comprising a galvanised sheet steel body with powder coated overlapping lid, white as standard. A cover strap is provided with each length of lid. This reduces the necessity for special on-site cutting requirements, the strap covering any cut edges.

- 20mm knockouts are provided in the partition at 250mm centres. This allows easy positioning of outlet plates, which require screening via the steel back box that fixes to the partition.
- Chamfered or flat top options as standard
- Other powder coated finishes are available even when only a short run of trunking is required
- 2 or 3 compartments are most commonly used. However systems to suit client's individual requirements can be manufactured within the same short lead times.



TC62/2C
150mm x 50mm
(2 compartment)
top 50mm, bottom 100mm



TC82/3C
200mm x 50mm
(3 compartment)
top 50mm, centre 100mm,
bottom 50mm

Factory manufactured sets

- Pier sets and off sets can be pre made minimising labour costs. A member of our technical staff could advise and assist for all on-site measurements
- Should you require factory made sets without the need of a site visit by our technical staff, dimensions of wall as shown here will be required.

How to order

- Accessory part numbers are the same for all styles of skirting and dado. It is the trunking part number pre-fixed before the accessory that ensures you get the correct item.
- Example: A twin socket outlet lid for 200mm x 50mm, 3 compartment flat top skirting. Take trunking reference TF82/3C + accessory part number TSO to give TF82/3C TSO

Accessories



ISB Internal Bend



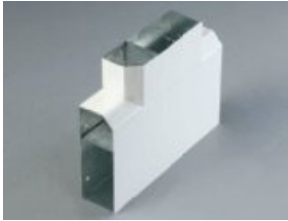
ESB External Bend



FSB/D Flat Bend



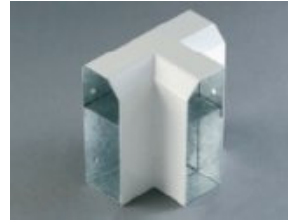
FSB/U Flat Bend (upward)



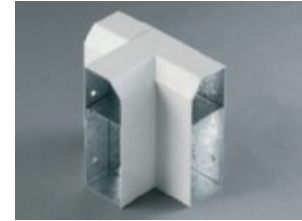
**FST/LH-U Flat tee
left hand (upward)**



**FST/RH-U Flat tee
right hand (upward)**



**IST/LH Internal tee
left hand**



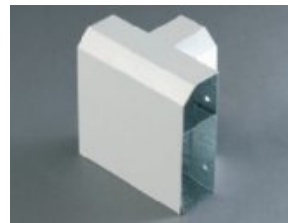
**IST/RH Internal tee
right hand**



FST/D Flat tee (downward)



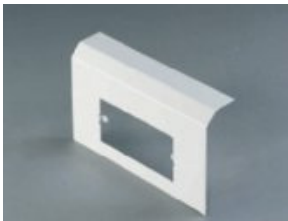
**EST/LH External tee
left hand**



**EST/RH External tee
right hand**



STRAP Additional cover strap



TSO Twin socket lid



SSO Single socket lid



EC/LH End cap left hand



EC/RH End cap right hand



SS/SB Back Box