

## Leading the way in cable trunking

For all products and sales...

call 01793 611777

fax 01793 615500



## Dado Trunking



**SD62/2C**  
150mm x 50mm  
(2 compartment)  
top 50mm, bottom 100mm



**SD82/3C**  
200mm x 50mm  
(3 compartment)  
top 50mm, centre 100mm,  
bottom 50mm

**Flytec dado trunking is supplied in 2 metre lengths. Manufactured to the same high quality as our skirting trunking it is designed to be installed around the perimeter, above floor level, thus allowing optimum use of floor space.**

- Chamfer top, flat top or double chamfer options available as standard
- 20mm knockouts are provided in the partition at 250mm centres. This allows easy positioning of outlet plates, which require screening via the steel back box that fixes to the partition.
- Other powder coated finishes are available even when only a short run of trunking is required
- 2 or 3 compartments are most commonly used. However systems to suit client's individual requirements can be manufactured within the same short lead times.



**CD62/2C**  
150mm x 50mm  
(2 compartment)  
top 50mm, bottom 100mm



**CD82/3C**  
200mm x 50mm  
(3 compartment)  
top 50mm, centre 100mm,  
bottom 50mm

### How to order

- Accessory part numbers are the same for all styles of skirting and dado. It is the trunking part number pre-fixed before the accessory that ensures you get the correct item.
- Example: An external bend for 200mm x 50mm, 2 compartment double chamfer dado. Take trunking reference DCD82/2C + accessory part number ESB to give DCD82/2C ESB

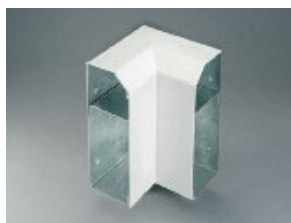


**DCD82/2C**  
200mm x 50mm  
(2 compartment)  
top 100mm, bottom 100mm



**DCD82/3C**  
200mm x 50mm  
(3 compartment)  
top 50mm, centre 100mm,  
bottom 50mm

## Accessories



**ISB Internal Bend**



**ESB External Bend**



**FSB/D Flat Bend**



**FSB/U Flat Bend (upward)**



**FST/LH-U Flat tee  
left hand (upward)**



**FST/RH-U Flat tee  
right hand (upward)**



**IST/LH Internal tee  
left hand**



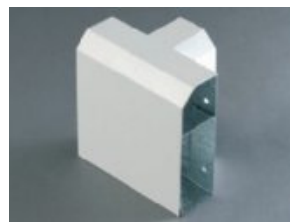
**IST/RH Internal tee  
right hand**



**FST/D Flat tee (downward)**



**EST/LH External tee  
left hand**



**EST/RH External tee  
right hand**



**STRAP Additional cover strap**



**TSO Twin socket lid**



**SSO Single socket lid**



**EC/LH End cap left hand**



**EC/RH End cap right hand**



**SS/SB Back Box**