

Leading the way in cable trunking

For all products and sales...

call 01793 611777

fax 01793 615500



Flush Floor Shallow Screeds

Flytec flush floor trunking body is supplied in 2 metre lengths complete with 2 x 1 metre lengths of lid secured by means of flush, all steel turnbuckle fasteners. Each length of trunking is supplied with one external fitting connector.

- Lids are manufactured from 3mm thick galvanised steel. They are fully removable and may be flush or recessed by 3mm as standard. Other depths of recess can also be supplied
- It is advisable that all lid sections are fitted during screeding. This will prevent any slight inward movement to the sides of trunking body

We recommend that Flytec flush floor trunking is installed on a ribbon screed or similar to ensure support along the entire length and width of the system.



2 Compartment Flush
D1/615/2C Size 150 x 38 D1/62/2C Size 150 x 50



2 Compartment Recessed
D2/615/2C Size 150 x 38 D2/62/2C Size 150 x 50



3 Compartment Flush
D1/915/3C Size 228 x 38 D1/92/3C Size 228 x 50



3 Compartment Recessed
D2/915/3C Size 228 x 38 D2/92/3C Size 228 x 50

Service Outlet Box

Service outlet boxes are available for shallow screed trunking. The underside of the box must be set lower into the floor to enable cables to pass under the socket outlet plates whilst maintaining lids to finish level with screed.

Carpet trim and lid assembly are manufactured in a tough plastic moulding which has two individual hinged cable outlets colour dark grey. The lid is reinforced by a 3mm steel plate. Carpet recess is 6mm. Additional sockets or a variation of plates can be supplied on request

Accessories



ASL Angle junction box



AST Tee junction box



ASX Crossover junction box



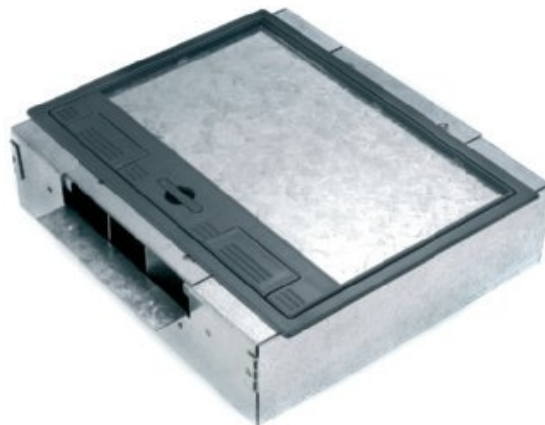
ISB Riser bend



**ISB/BE Riser bend
back entry to skirting**



EC Stop end



**D1/SB2/1TS 2 compartment service box
(1 RJ45 plate and 1 twin socket)**

**D1/SB3/1TS 3 compartment service box
(1 RJ45 plate, 1 blank plate and 1 twin socket)**